

Optional Accessories

- Current Booster (Phpc01)



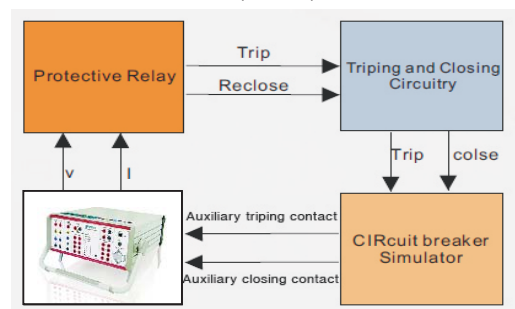
Phpc01 current booster is designed to supply high compliance voltage even at small current range, suitable for testing high burden electromagnetic current relays.

- GPS synchronization (**PGPS02**)



It provides GPS synchronization signal in PPS (pulse per second) or PPM (pulse per minute) for synchronized test. Trigger time can be set for end-to-end test application.

- Circuit breaker simulator(**PSS01**)



Working together with PONOVO relay testing device, PSS01 is to be used to simulate the circuit breaker operation for checking the relay scheme performance. Complicated software settings can be avoided by using this simple accessory.

- Scanning Head (**PACB108**)



The passive optical scanning head PACB108 detects the status of an LED, that is either an optical pulse output from an energy meter or the binary status of a protective relay or other similar optical source.

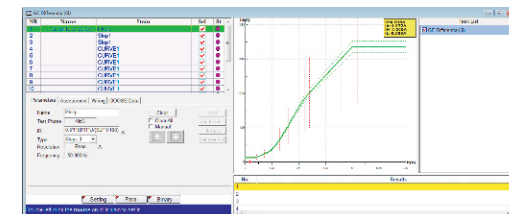
PowerTest Relay Test Software

[Start Page](#)



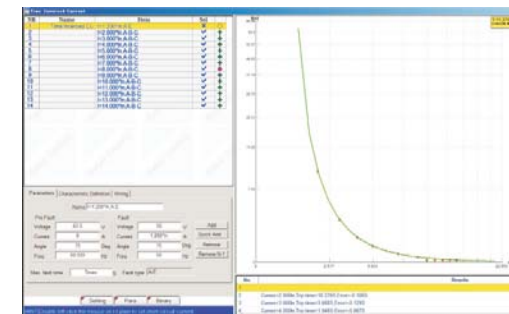
Differential

Differential module is suitable for use the 6 output current channels' relay tester, which is applied on transformer, generator and bus bar etc. differential protection equipment test. Because of adopting the 6 currents output, it realizes the two sides three phases test between relay tester and relay equipment.



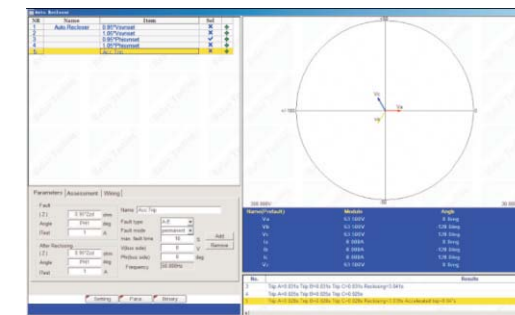
Inverse time overcurrent

This module realizes the directional over-current test and non-directional over-current test. This module also include: testing positive sequence, negative sequence and zero sequence instantaneous time over-current, over-heat protection inverse time over-current or the customized "Current/Time" operation characteristic.



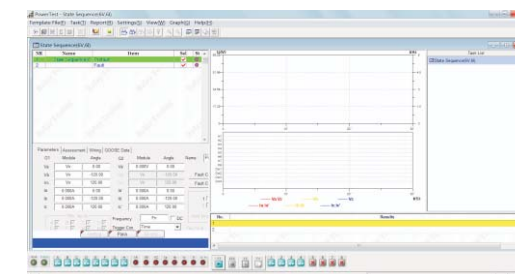
Auto-reclosing

Auto-reclosing module is the specific module which is applied to test the reclose function. This module can realize that relay automatic reclosing with checking the difference between system and unit, checking the synchronization setting, reclose set time checking and automatic evaluating of testing results.



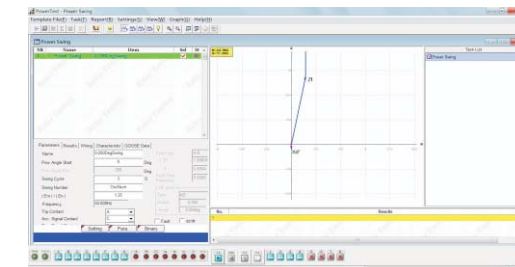
State Sequence

In the State-Sequence module, the relay tester can output multiple continuous state sequences. This module can help user to do customized test.



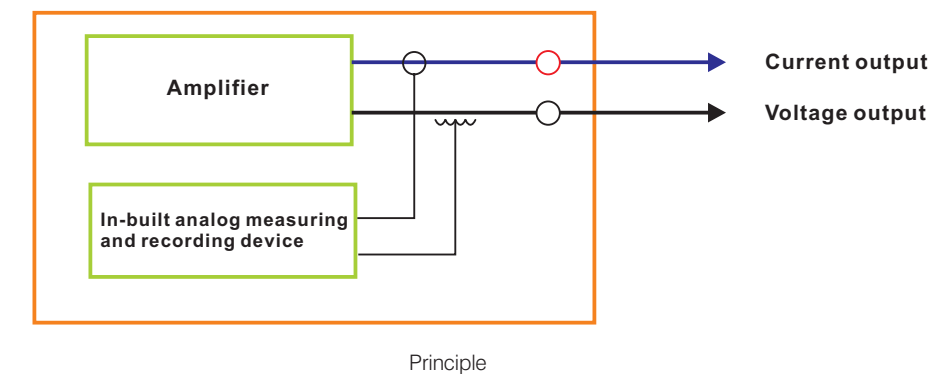
Power swing

Power swing module is applied to simulate the power system swing and test the generator losing synchronization and normal network splitting equipment.



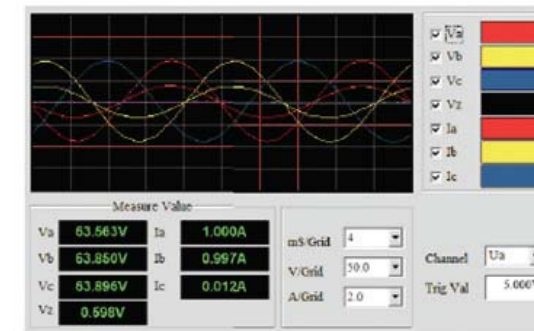
In-built analog monitoring & recording unit

This in-built analog monitoring and recording unit samples the actual current/voltage outputs and real-time output waveform can be displayed in the software. This makes it easy to check the correctness of wiring before the test and observe the output during the test process



Principle

Real-time output waveform display helps the fast trouble shooting of wiring and test circuitry before test is actually started. User can also use this provision to analyze the external signals, such as phase angle, power, harmonic, etc.



Real-time outputs display

IEC 61850 Function

PW460 provides analog voltage/current signal to relay and the GOOSE message from relay is received and interpreted by relay test equipment.



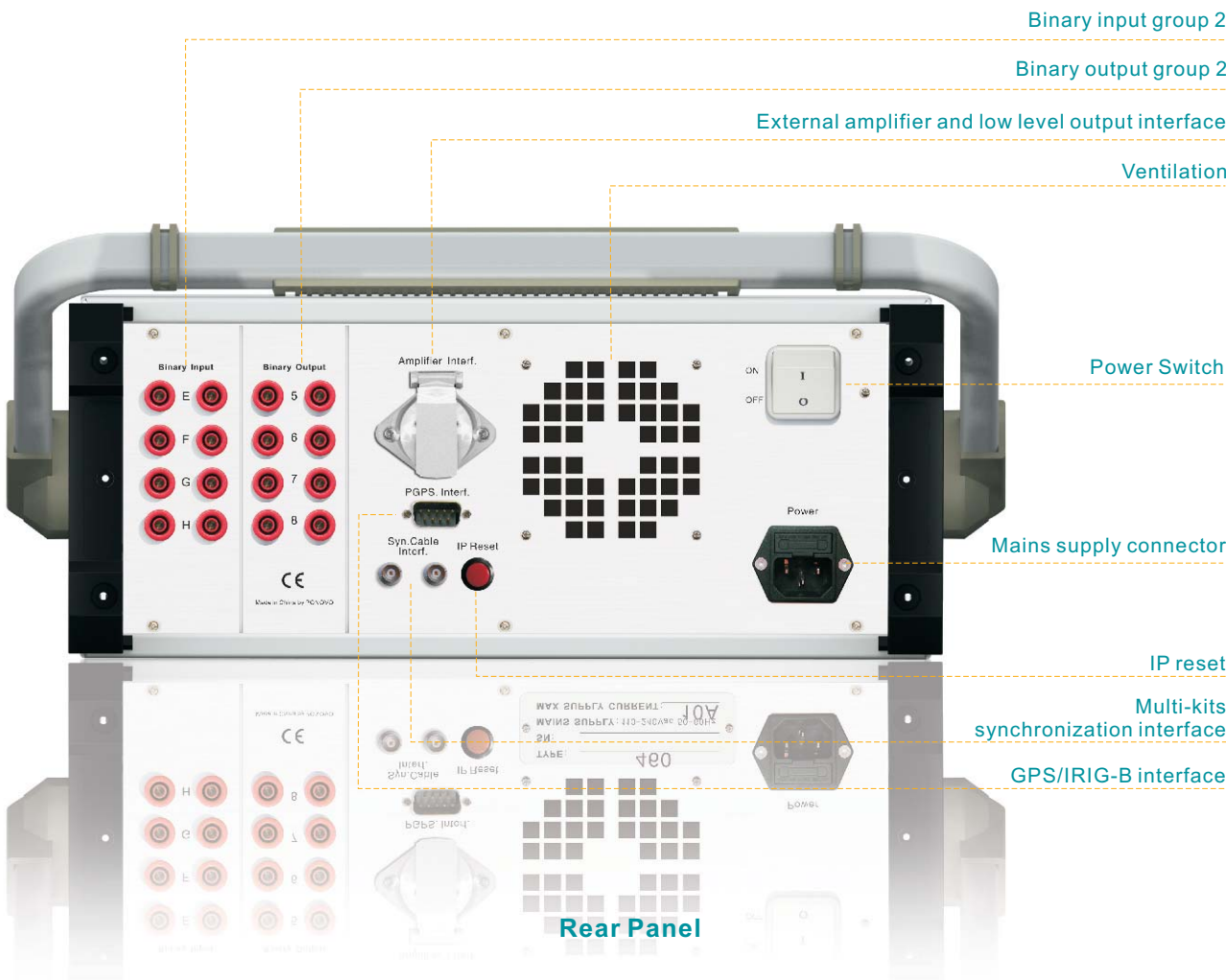
PONVO Template Service

PONOVO provides relay test templates based on relay model from different relay manufactures. With the use of template the relay test work can be simplified greatly. Each relay test template is one independent file which can be opened in PowerTest relay test software. Registered users can download the relay templates from PONOVO website. The following are some typical relay templates for some popular relays from relay manufactures.



More Templates can be download from our website www.relaytest.com

Do you want to know a new friend?
Here is PW460, Your good assistant on relay testing.



PONOVO POWER CO., LTD.
2F,4Cell,Tower C,In.Do Manslon,
No.48A Zhichun Road,Haidian District
Beijing,PR China(100098)
Tel:+86 (10) 5873 1010
Fax:+86 (10) 5873 1816
www.relaytest.com
info@relaytest.com
support@relaytest.com



PONOVO POWER CO., LTD.
www.relaytest.com



PW460 Relay tester

Universal testing system PW460 (6*15A, 4*300V) can test all types of protective relays, including modern IEC61850 based relays. Other test works, such as transducer, energy meter, indication meter, etc., can also be done easily. It's the ideal test device for all power utilities, power plants, relay manufactures, panel manufactures, research institutes, Universaliities, testing companies, etc.

Product Features

- In-built monitoring and recording
- Large output power
- High accuracy
- Support GOOSE based test
- Multi-kits synchronization interface
- Current booster interface for testing high burden relay

